

imageRUNNER ADVANCE DX 8700 Series

ELEVATE YOUR BLACK AND WHITE PRODUCTION CAPABILITIES WITH STATE-OF-THE-ART TECHNOLOGY

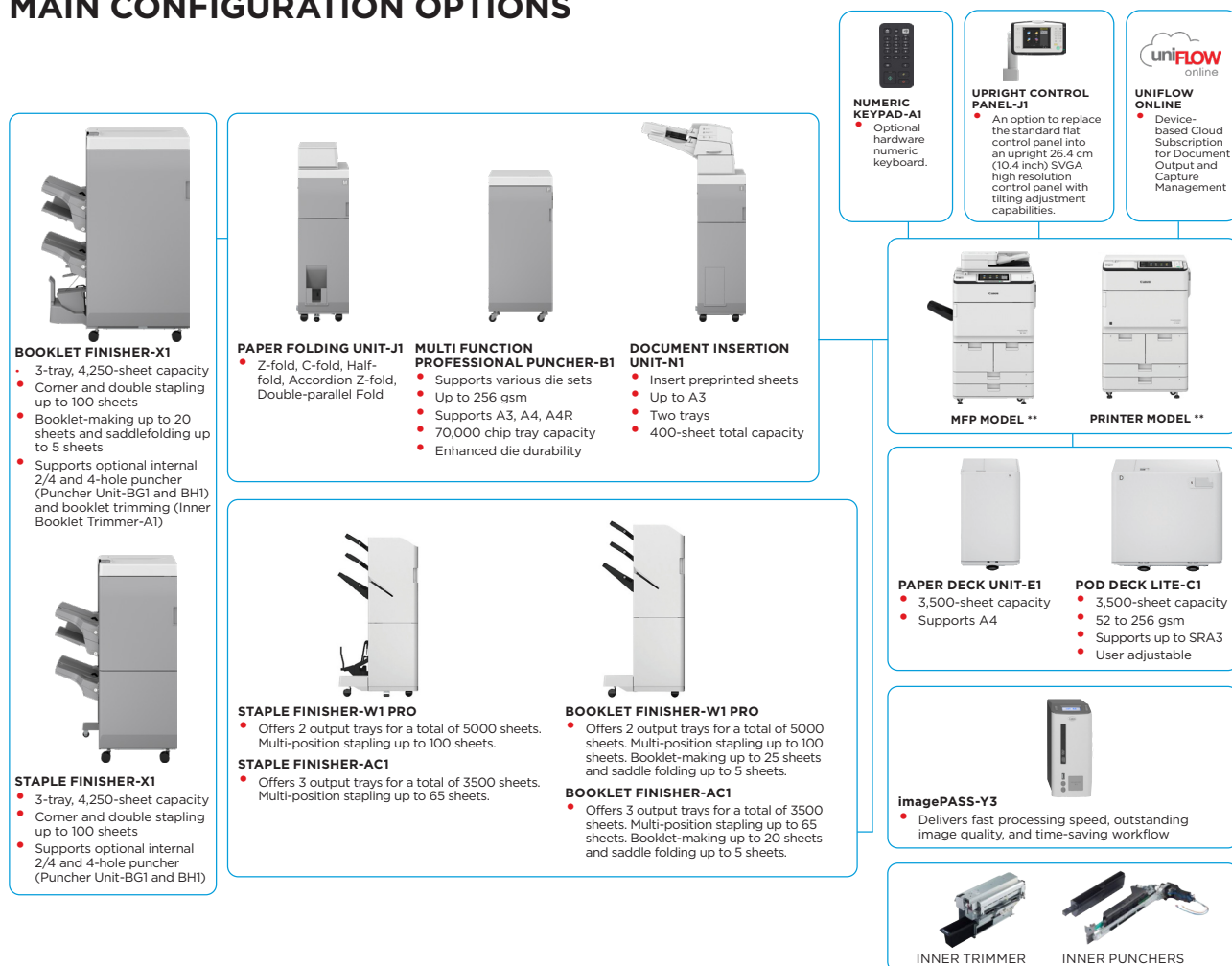


Canon uniFLOW Online
Outstanding Cloud Output-Management Solution



New to the Line

MAIN CONFIGURATION OPTIONS



This flat configuration is for illustration purpose only. For a complete list of options and the exact compatibility relationships, please refer to the online [product configurator](#).

The Unified Firmware Platform (UFP) ensures that the latest feature upgrades and protection are available, for an enhanced user experience across the entire iR ADVANCE DX portfolio.

Canon

TECHNICAL SPECIFICATIONS

imageRUNNER ADVANCE DX 8700 Series

MAIN UNIT		Print Resolution (dpi)		1,200 x 1,200
Type	A3 Monochrome Laser Multifunctional	Page description languages		Standard: UFR II (standard), Optional: PCL 6, Adobe PostScript®3™
Core functions	Print, Copy*, Scan*, Send*, Store and Optional Fax* *Not available on iR-ADV DX 8700 Printer model	Direct Print		Supported file types: PDF, EPS, TIFF/JPEG and XPS
Processor	1.75GHz Dual Core Processor	Printing from mobile and cloud		AirPrint, Mopria, Google Cloud Print, and Canon Business Print, and uniFLOW Online
Control Panel	Standard: 10.1" TFT LCD WSVGA Color Touch panel Optional: 10.4" TFT LCD SVGA Color Upright Touch panel for MFP Model	Fonts		A range of software and MEAP-based solutions are available to provide printing from mobile devices or internet-connected devices and cloud-based services depending on your requirements. Please contact your sales representative for further information
Memory	Standard: 3.0 GB RAM	Print Features		PS fonts: 136 Roman PCL fonts: 93 Roman, 10 Bitmap fonts, 2 OCR fonts, Andale Mono WTJ/K/S/T ¹ (Japanese, Korean, Simplified and Traditional Chinese), Barcode fonts ² ^{*1} Optional PCL International Font Set-A1 is required. ^{*2} Optional Barcode Printing Kit-D1 is required.
Hard Disk drive	Standard*: 320GB (available disk space: 250GB), Optional: 250GB, 1TB *A different initial HDD may be used.	Operating System		UFR II: Windows®7/8.1/10/Server 2008/Server 2008 R2/Server 2012/Server 2012 R2/Server 2016/Server 2019, MAC OS X (10.10 or later) PCL: Windows®7/8.1/10/Server 2008/Server 2008 R2/Server 2012/Server 2012 R2/Server 2016/Server 2019 PS: Windows®7/ 8.1/10/Server 2008/Server 2008 R2/Server 2012/Server 2012 R2/Server 2016/Server 2019, MAC OS X (10.10 or later) PPD: Windows®7/8.1/10, MAC OS X (10.9 or later), McAfee Embedded Control Software As of July, 2019.
Mirroring Hard Disk Drive	Optional	COPY SPECIFICATIONS		
Interface Connection	Network Standard: 1000Base-T/100Base-TX/10Base-T, Wireless LAN (IEEE 802.11 b/g/n) Optional: NFC, Bluetooth 4.1 Low Energy Others Standard: USB 2.0 (Host) x1, USB 3.0 (Host) x1, USB 2.0 (Device) x1; Optional: Serial Interface, Copy Control Interface	Copy Speed		iR-ADV DX 8705: up to 105 ppm (A4), up to 54 ppm (A3), up to 76 ppm (A4R), up to 105 ppm (A5R) iR-ADV DX 8795: up to 95 ppm (A4), up to 50 ppm (A3), up to 69 ppm (A4R), up to 95 ppm (A5R) iR-ADV DX 8786: up to 86 ppm (A4), up to 44 ppm (A3), up to 63 ppm (A4R), up to 86 ppm (A5R)
Paper Supply Capacity (A4, 80gsm)	Standard: 4,200 sheets 100-sheet Multi-purpose tray x 1 1,500-sheet Paper Deck x 2, 550-sheet Paper Cassette x 2, Maximum: 8,860 sheets (64gsm) / 7,700 sheets (80gsm) (with POD Deck Lite-C1 or Paper Deck Unit-E1)	First-Copy-Out Time (A4)		Approx. 2.7 seconds or less
Paper output capacity (A4, 80gsm)	250 sheets (with Copy Tray-R2). Maximum: 5,000 sheets (High-Volume Stack mode "ON" with Staple Finisher-W1 PRO or Booklet Finisher-W1 Pro)	Copy resolution (dpi)		600 x 600
Finishing capabilities	With options: Collate, Group, Offset, Staple, Saddle Stitch, Hole Punch, Eco Staple, Staple On Demand, Document Insertion, Z-fold, Half-fold, C-fold, Accordion-Z fold, Double Parallel-fold, Trimming	Multiple Copies		Up to 9,999 copies
Supported media types	Multi-purpose tray: Thin, Plain, Recycled, Color, Heavy, Bond, Transparency, Labels, Pre-punched, Letterhead, Tab, Tracing Paper Decks (Right/Left): Thin, Plain, Recycled, Color, Heavy, Bond, Pre-punched, Letterhead Paper Cassettes (Upper/Lower): Thin, Plain, Recycled, Color, Heavy, Bond, Pre-punched, Letterhead, Tab* *Tab Feeding Attachment-B1 is required.	Copy Density		Automatic or Manual (9 Levels)
Supported media sizes	Multi-purpose tray: Standard size: SRA3, A3, A4, A4R, A5*, A5R, A6R*, B4, B5, B5R Custom size: 100.0 x 148.0 mm to 330.2 x 487.7 mm Free size: 100.0 x 148.0 mm to 330.2 x 487.7 mm ^{*1} Supported media weights: more than 64 gsm ^{*2} Supported media weights: more than 91 gsm Paper Decks (Right/Left): Standard size: A4, B5 Paper Cassettes (Upper/Lower): Standard size: SRA3, A3, A4, A4R, A5R, B4, B5, B5R Custom size: 139.7 x 182.0 mm to 330.2 x 487.7 mm	Magnification		Variable zoom: 25% to 400% (1% Increments) Preset reduction/enlargement: 25%, 50%, 70%, 100%(1:1), 141%, 200%, 400%
Supported media weights	Multi-purpose tray: 52 to 256 gsm Paper Decks (Right/Left): 52 to 220 gsm Paper Cassettes (Upper/Lower): 52 to 220 gsm Duplex: 52 to 220 gsm	Copy Features		Preset R/E Ratios by Area, Two-Sided, Density Adjustment, Original Type Selection, Interrupt Mode, Book to Two Pages, Two-sided Original, Job Build, N on 1, Add Cover, Insert Sheets, Different Size Originals, Page Numbering, Copy Set Numbering, Sharpness, Erase Frame, Secure Watermark, Print Date, Gutter, Print & Check, Negative/Positive, Repeat Images, Merge Job Blocks, Mirror Image, Store in Mail Box, Superimpose Image, Copy ID Card, Skip Blank Pages, Free Size Original, Reserved copy, Copy Sample
Warm-up Time	Quick Startup Mode: 4 seconds or less* *Time from device power-on to when the copy icon appears and is enabled to operate on the touch panel display. From Deep Sleep Mode: 60 seconds or less From Power On: 60 seconds or less* *Time from device power-on, until copy ready (not print reservation)	SCAN SPECIFICATIONS		
Dimensions (W x D x H)	iR-ADV DX 8705/8795/8786 MFP Model (with Upright touch panel): 1,170 x 770 x 1,252 mm iR-ADV DX 8705/8795/8786 MFP Model (with flat touch panel): 670 x 770 x 1,185 mm iR-ADV DX 8705/8795/8786 Printer Model: 670 x 770 x 1,075 mm	Type		Single-pass Duplexing Automatic Document Feeder [2-sided to 2-sided (Automatic)] *Detect Feeder Multi Sheet Feed is supported.
Installation Space(W x D)	Basic: 1,533 x 1,353 mm (with Multi-purpose tray/upper-right cover open + Front Cover open + Copy Tray) Fully configured: 5,068 x 1,409 mm (with POD Deck Lite-C1 + Document Insertion Unit-N1 + Multifunction Professional Puncher-B1 + Paper Folding Unit-J1 + Booklet Finisher-W1 Pro + Booklet Trimmer-F1 + Main unit Front Cover open)	Document Feeder Paper		up to 250 sheets (64gsm) up to 200 sheets (80gsm)
Weight	iR-ADV DX 8705/8795/8786 MFP Model: approx. 225 kg ^{*1} , 221 kg ^{*2} iR-ADV DX 8705/8795/8786 Printer Model: approx. 201 kg ^{*3} ^{*1} Including DADF, Upright touch panel and the toner bottle. ^{*2} Including DADF, flat touch panel and the toner bottle. ^{*3} Including Flat panel, printer cover and the toner bottle.	Acceptable originals and weights		Platen: Sheet, Book, and 3-Dimensional Objects Document Feeder media weight: 1-sided scanning: 38 to 220 gsm 2-sided scanning: 38 to 220 gsm *An acceptable weights of A6R or smaller is 50 to 220gsm.
PRINT SPECIFICATIONS		Supported media sizes		Platen max. scanning size: up to 297.0 x 431.8 mm Document Feeder media size: A3, A4, A4R, A5, A5R, A6R, B4, B5, B5R, B6R, Custom size: 70.0 x 139.7 mm to 304.8 x 431.8 mm
Print Speed	iR-ADV DX 8705: up to 105 ppm (A4), up to 54 ppm (A3), up to 76 ppm (A4R), up to 105 ppm (A5R) iR-ADV DX 8795: up to 95 ppm (A4), up to 50 ppm (A3), up to 69 ppm (A4R), up to 95 ppm (A5R) iR-ADV DX 8786: up to 86 ppm (A4), up to 44 ppm (A3), up to 63 ppm (A4R), up to 86 ppm (A5R)	Scan Speed (ipm, BW/CL, A4)		1-sided Scanning: 135/135 (300 x 300 dpi, send), 135/80 (600 x 600 dpi, copy) 2-sided Scanning: 270/270 (300 x 300 dpi, send), 165/90 (600 x 600 dpi, copy)
		Scan Resolution (dpi)		Scan for Copy: 600 x 600 Scan for Send: (Push) 600 x 600 (SMB/FTP/WebDAV/IFAX), (Pull) 600 x 600 Scan for Fax: 600 x 600
		Pull Scan Specifications		Color Network ScanGear2. For both TWAIN and WIA Supported OS: Windows®7/8.1/10/Server2008/Server2008 R2/Server2012/Server2012 R2/Server 2016
		Scan Method		Push Scan, Pull Scan, Scan to Box, Scan to Advanced Space, Scan to Network, Scan to USB Memory Key, Scan to Mobile device, Scan to cloud (uniFLOW Online)



TECHNICAL SPECIFICATIONS

imageRUNNER ADVANCE DX 8700 Series

SEND SPECIFICATIONS

Destination	Standard: E-mail/Internet FAX (SMTP) SMB3.0 FTP WebDAV Mail Box Optional: Super G3 FAX, IP Fax LDAP (2000)/Local (1600)/Speed dial (200)
Address Book	
Send resolution (dpi)	Push: up to 600 x 600 Pull: up to 600 x 600
Communication protocol	File: FTP(TCP/IP), SMB3.0 (TCP/IP), WebDAV E-mail/I-Fax: SMTP, POP3
File Format	Standard: TIFF, JPEG, PDF(Compact, Searchable, Apply policy, Optimize for Web, PDF/A-1b, Trace & Smooth, Encrypted, Device Signature, User Signature), XPS(Compact, Searchable, Device Signature, User Signature), Office Open XML (PowerPoint, Word)
Universal Send Features	Original Type Selection, Two-sided Original, Book to Two Pages, Different-size Originals, Density Adjustment, Sharpness, Copy Ratio, Erase Frame, Job Build, Delayed Send, Preview, Job Done Notice, File Name, Subject/Message, Reply-to, E-mail Priority, TX Report, Original Content Orientation, Skip Blank Pages

FAX SPECIFICATIONS

Maximum Number of Connection Lines	2
Modem Speed	Super G3: 33.6 kbps G3: 14.4 kbps
Compression Method	MH, MR, MMR, JBIG
Resolution (dpi)	400 x 400 (Ultra Fine), 200 x 400 (Super Fine), 200 x 200 (Fine), 200 x 100 (Normal)
Sending/Receiving Size	Sending: A3, A4, A4R, A5 ¹ , A5R ¹ , B4, B5 ² , B5R ¹ Receiving: A3, B4, A4, A4R, A5R ¹ , B5, B5R ¹ Sent as A4 ² Sent as B4 short
FAX memory	Up to 30,000 pages (2,000 jobs)
Speed dials	Max. 200
Group dials/destinations	Max. 199 dials
Sequential broadcast	Max. 256 addresses
Memory backup	Yes
Fax Features	Sender's Name (TTI), Selecting the Telephone Line (when sending fax), Direct Send, Delayed Send, Preview, Job Done Notice, TX Report, Interrupt Transmission, Sequential Broadcasting, Password/Subaddress Sending, Confidential Mailbox, 2 on 1 Log

STORE SPECIFICATIONS

Mail Box (Number supported)	100 User Inboxes, 1 Memory RX Inbox, 50 Confidential Fax Inboxes Maximum 30,000 Pages (2,000 jobs) Stored
Advanced Space	Communication Protocol: SMB or WebDAV Supported Client PC: Windows® 8.1/10 Concurrent Connections (Max.): SMB:64, WebDAV:3
Advanced Space available disc space	Standard:16 GB (With option: max. 480GB)
Advanced Space Features	Authentication for Advanced Space Log-in, Sort Function, Printing a PDF File with a Password, ImageWARE Secure Audit Manager Support, Search, File Preview, Authentication Management, Open to public, URI TX, Backup/Restore

SECURITY SPECIFICATIONS

Authentication and Access Control	User Authentication (Picture Login, Picture and PIN Login, Card Login, Username and Password Login, Function Level Login, Mobile Login), Department ID Authentication (Department ID and PIN Login, Function Level Login), uniFLOW Online Express (PIN Login, Picture Login, Picture and PIN Login, Card Login, Card and PIN Login, Username and Password Login, Department ID and PIN Login, Function Level Login), Access Management System (Access Control)
Document Security	Print Security (Secure Print, Encrypted Secure Print, Forced Hold Printing, uniFLOW Secure Print ¹), Receive Data Security (Confidential Fax Inbox Forwarding Received Documents Automatically), Scan Security (Encrypted PDF, Device Signature PDF/XPS, User Signature PDF/XPS, Adobe LiveCycle® Rights Management ES2.5 Integration), BOX Security (Mail Box Password Protected, Advanced Space Access Control), Send Data Security (Setting for requesting password input per transmission, Restricted E-mail/File send functions, Confirming FAX number, Allow/Restrict Fax Driver Transmissions, Allow/Restrict Sending from History, S/MIME Support), Document Tracking (Secure Watermark) ¹ Requires uniFLOW Online / uniFLOW

Network Security

Device Security	TLS 1.3, IPsec, IEEE802.1X authentication, SNMP V3.0, Firewall Functionality (IP/MAC Address Filtering), Dual Network Support (Wired LAN/Wireless LAN, Wired LAN/Wired LAN), Disabling Unused Functions (Enabling/Disabling Protocols/Applications, Enabling/Disabling Remote UI, Enabling/Disabling USB Interface), Communication Line Separation (G3 FAX, USB Port, Advanced Space, Scan and Send -Virus Concerns for E-mail Reception)
Device Management and Auditing	Protecting HDD Data (HDD Data Encryption (FIPS140-2 Validated), HDD Data Overwrite Erase, HDD Lock), Standard HDD Initialize, Trusted Platform Module (TPM), Job Log Conceal Function, Protecting MFD Software Integrity, Checking MFD Software Integrity (Verify System at Startup, Runtime Intrusion Detection), Comply IEEE2600.2 (Common Criteria Certification) (TBD)

ENVIRONMENTAL SPECIFICATIONS

Operating Environment	Temperature: 10 to 30 °C Humidity: 20 to 80 % RH (Relative Humidity)
Power Source	220-240V, 50/60Hz, 10A
Power Consumption	Maximum: Approx. 2,400 W Copying (with DADF continuous scan): Approx. 1,517 W ¹ Standby: Approx. 217 W ¹ Sleep mode: Approx. 0.9 W ² ¹ Reference value: measured one unit ² 0.9 W sleep mode may not be possible in all circumstances due to certain settings.
Noise Levels	Typical Electricity Consumption (TEC)* : iR-ADV DX 8705: 9.6 kWh iR-ADV DX 8795: 9.0 kWh iR-ADV DX 8786: 8.6 kWh *As per USA Energy Star 3.0 <u>Sound Power Level (LWA,m)*</u> Active (1-sided) iR-ADV DX 8705: 7.3 B, Kv 0.3 B iR-ADV DX 8795/8786/Printer Model: 7.2 B, Kv 0.3 B *Reference value: measured only one unit with ISO7779, described with ISO9296 (2017) <u>Sound Pressure (LpAm)</u> Bystander's position: Active (1-sided): 58 dB* , Standby: 36 dB* * Reference value: measured only one unit with ISO7779, described with ISO9296 (2017)

CONSUMABLES

Toner Cartridge	C-EXV 35 Black Toner
Toner (Estimated Yield @6% Coverage)	70,000 pages

SOFTWARE AND PRINTER MANAGEMENT

Tracking and reporting	For detailed information please visit our website https://www.canon-europe.com/business/ Universal Login Manager (ULM) uniFLOW Online Express¹ ¹ For more information, please refer to uniFLOW Online Express/uniFLOW Online Technical Datasheets
Remote management tools	iW Management Console eMaintenance Content Delivery System
Scanning software	Network ScanGear
Optimisation tools	Canon Driver Configuration Tool NetSpot Device Installer
Platform	MEAP (Multifunctional Embedded Application Platform)
Document Administration	Kofax Power PDF (Optional)

FIERY PRINT CONTROLLER SPECIFICATIONS (EXTERNAL)

Optional/Standard	Optional on all models
Name	imagePASS-Y3 V1.1 (Server)
Print Resolution (dpi)	1200 x 1200, 600 x 600
Standard Page Description Language(s)	PCL6, Adobe PostScript 3
Memory	8GB (2 x 4GB)
Hard Disk Drive	500 GB SATA
Processor	Intel Pentium G4400 (3.3 GHz)
System	FS350Pro
Fonts	PS: 138 Fonts PCL: 113 Fonts



TECHNICAL SPECIFICATIONS

imageRUNNER ADVANCE DX 8700 Series

Supported Operating Systems	Windows 7 64 bit/Windows 8.1 64 bit/Windows 10 64 bit/ Windows Server 2008 R2 64bit only/Windows Server 2012 64bit only (Only Printer driver support)/Windows Server 2012 R2 64bit only/Windows Server 2016 R2 64 bit only, MAC OS (10.11,10.12, 10.13, 10.14)	Booklet Finisher-X1	(Includes the above Staple Finisher-X1 basic specifications.) Saddle Stitch paper size: SRA3, A3, A4R, B4, Custom Size (195.0 x 270.0 mm to 330.2 x 457.2 mm) Saddle Stitch Staple Capacity: 20 sheets x 5 sets (60 to 81.4 gsm) (including 1 cover sheet up to 256 gsm) Non Staple Folded Bunch Capacity: 5 sheets (60 to 105 gsm) Power Source: 100-240V AC/50-60 Hz/2.8A Dimensions (W x D x H): 896 x 765 x 1,040 mm (when the extension tray is extended) Weight: Approx. 110 kg
Interface	2 x Ethernet (1000Base-T/100Base-TX/10Base-T), USB 3.0 x 2 (rear), x 3 (front on Fiery Quick Touch TM), USB 2.0 x 4 (rear)	Staple Finisher-W1 PRO	Tray Capacity (with 80gsm paper): Upper Tray: SRA3, A3, A4, A4R, A5, A5R, A6R, B4, B5, B5R: 1,000 sheets Z-Fold: A3, B4: 30 sheets Half-fold: A4R 50 sheets Lower Tray: If the High-Volume Stack Mode is set to "ON": A4, B5: 4,000 Sheets, A4R, B5R: 2,000 Sheets, SRA3, A3, B4: 1500 Sheets, If the High-Volume Stack Mode is set to "OFF": A4, B5: 2,000 Sheets, SRA3, A3, A4R, B4, B5R: 1,000 Sheets Paper Weight: 52 to 256 gsm Staple Position: Corner, Double Staple Capacity: Corner and Double Stapling: A4, B5: 100 sheets (52 to 80 gsm), A3, A4R, B4, B5R: 50 sheets (52 to 81.4 gsm) Power Source: 220-240V/50-60 Hz/8A Dimensions (W x D x H): 890 x 792 x 1,239 mm (when the extension tray is extended) Weight: Approx. 130 kg
Network protocols	TCP/IP (FTP, SMTP, POP, HTTP, SNMP, LDAP, SLP, SMB, LPD, IPP, WS-Discovery, Bonjour, Direct Mobile Printing, Port9100, SNTP, 802.1X, DHCP, DNS, NTP)		
Direct Print	PDF1.7, EPS, TIFF6, JDF1.4/JMF (Optional)		
VDP	FreeForm v1, v2.1, PPML, PDF/VT-1, PDF/VT-2, Creo VPS		
Fiery Print Controller Standard Features	Fiery Command WorkStation6/Paper Catalog/Fiery Remote Scan/Fiery Hot Folders & Virtual Printers/Fiery JDF	Booklet Finisher-W1 PRO	(Includes the above Staple Finisher-W1 PRO basic specifications.) Saddle Stitch paper size: SRA3, A3, A4R, B4, Custom Size (210.0 x 279.4 mm to 330.2 x 487.7 mm) Saddle Stitch Staple Capacity: 25 sheets (52 to 80 gsm) [including 1 cover sheet up to 256 gsm] Non Staple Folded Bunch Capacity: up to 5 sheets (52 to 209 gsm) Power Source: 220-240V/50-60 Hz/8A Dimensions (W x D x H): 1,060 x 792 x 1,239 mm (when the extension tray is extended) Weight: Approx. TBD kg
Fiery Print Controller Options	Fiery Impose/Fiery Compose/Fiery Impose and Compose/ Removable HDD kit/Fiery Image Viewer		
HW Platform	NX One		
Base OS	Windows 10 IoT Enterprise 2019 LTSC		
Power source	AC100-240V, 50Hz/60Hz, 3.0A (100V) - 1.5A (240V)		
Maximum Power consumption	53 W		
Dimensions (W x D x H)	203 x 248 x 384 mm		
Weight	Server unit only: Approx. 5.9 kg		
PAPER SUPPLY OPTIONS			
Paper Deck Unit-E1	Paper Capacity: 3,500 sheets (80 gsm) Paper Type: Thin, Plain, Recycled, Color, Heavy, Bond, Pre-punched, Letterhead Paper Size: A4, B5 Paper Weight: 52 to 256 gsm Power Source: from the Main Unit Dimensions (W x D x H): 340 x 630 x 572 mm (attached to the main unit) Weight: Approx. 34 kg		
POD Deck Lite-C1	Paper Capacity: 3,500 sheets (80 gsm) Paper Type: Thin, Plain, Recycled, Color, Heavy, Tracing, Bond, Transparency, Label, Pre-punched, Letterhead, Tab Paper Size: SRA3, A3, A4, A4R, A5R, B4, B5, B5R Custom Size (139.7 x 182.0 mm to 330.2 x 487.7 mm) Paper Weight: 52 to 256 gsm Power Supply: 220-240V, 50/60Hz, 1.2A Dimensions (W x D x H): 633 x 686 x 574 mm (attached to the main unit) Weight: Approx. 68 kg	2/4 Hole Puncher Unit-A1	(Requires either the Staple Finisher-AC1 or Booklet Finisher-AC1) Two or Four Holes Acceptable Punch Paper Weight: 52 to 256 gsm Acceptable Punch Paper Size: Two holes: A3, A4, A4R, A5, B4, B5, B5R Four holes: A3, A4 Power Source: From the finisher
OUTPUT OPTIONS*	*Paper capacity may vary with different of paper type/size.	4 Hole Puncher Unit-A1	(Requires either the Staple Finisher-AC1 or Booklet Finisher-AC1) Four Holes Acceptable Punch Paper Weight: 52 to 256 gsm Acceptable Punch Paper Size: Four holes: A3, A4, A4R, A5, B4, B5, B5R Power Source: From the finisher
Copy Tray-R2	Provides a simple tray for basic output needs. Capacity: 250/100 sheets (1-sided/2-sided, 80 gsm) Dimensions (W x D x H): 420 x 382 x 175 mm	Puncher Unit-BG1	(Requires either the Staple Finisher-X1 or Booklet Finisher-X1) Two or Four Holes Acceptable Punch Paper Weight: 52 to 256 gsm Acceptable Punch Paper Size: Two holes: A3, A4, A4R, A5, B5R Four holes: A3, A4 Power Source: From the finisher
Staple Finisher-AC1* *only available for IR-ADV DX 8786	Tray Capacity (with 80gsm paper): Upper Tray: A4, A5, A5R, A6R, B5: 250 sheets A3, A4R, B4, B5R: 125 sheets SRA3: 30 sheets Mid Tray: Same as upper tray Lower Tray: A4, A5, A5R, B5: 3,000 sheets SRA3, A3, A4R, B4, B5R: 1,500 sheets A6R: 250 sheets Paper Weight: 52 to 256 gsm Staple Position: Corner, Double Staple Capacity: A4, B5: 65 sheets (52 to 90 gsm) A3, A4R, B4: 40 sheets (52 to 90 gsm) Eco Staple: A3, A4 5 sheets (52 to 64 gsm) 4 sheets (65 to 81.4 gsm) 3 sheets (81.5 to 105 gsm) Staple On Demand: 65 sheets (52 to 90 gsm) Power supply: From the main unit Dimensions (W x D x H): 656 x 623 x 1,195 mm (when the extension tray and rotary tray are extended) Weight: Approx. 36 kg	Puncher Unit-BH1	(Requires either the Staple Finisher-X1 or Booklet Finisher-X1) Four Holes Acceptable Punch Paper Weight: 52 to 256 gsm Acceptable Punch Paper Size: Four holes: A3, A4, A4R, A5, B4, B5, B5R Power Source: From the finisher
Booklet Finisher-AC1* *only available for IR-ADV DX 8786	(Includes the above Staple Finisher-AC1 basic staple specifications.) Saddle Stitch paper size: A3, A4R, B4, Custom Size (182.0 x 210.0 mm to 304.8 x 457.2 mm) Saddle Stitch Staple Capacity: 20 sheets x 10 sets (52 to 81.4 gsm) (including 1 cover sheet up to 256 gsm) Non Staple Folded Bunch Capacity: 3 sheets (52 to 105 gsm) Power supply: From the main unit Dimensions (W x D x H): 656 x 623 x 1,195 mm (when the extension tray and rotary tray are extended) Weight: Approx. 60 kg	Puncher Unit-BT1	(Requires either the Staple Finisher-W1 PRO or Booklet Finisher-W1 PRO) Two or Four Holes Acceptable Punch Paper Weight: 52 to 256 gsm Acceptable Punch Paper Size: Two holes A3, A4, A4R, A5, B4, B5, B5R, Custom size (182.0 x 182.0 mm to 297.0 x 432.0 mm, excluding 203 x 257 mm to 297 x 270 mm) Four holes A3, A4, B4, B5, Custom size (257.0 x 182.0 mm to 297.0 x 432.0 mm) Power Supply: From the finisher
Staple Finisher-X1	Tray Capacity (with 80gsm paper): Upper Tray: A4, A5R, B5: 1,500 sheets SRA3, A3, A4R, B4, B5R: 750 sheets A6R: 250 sheets Mid Tray: A4, A5R, B5: 250 sheets A3, A4R, A5, A6R, B4, B5R: 125 sheets SRA3: 30 sheets Lower Tray: A4, B5: 2,500 sheets (Cascade-Load mode), A4, A5R, B5: 1,500 sheets, SRA3, A3, A4R, A5, B4, B5R: 750 sheets, A6S: 250 sheets Paper Weight: 52 to 256 gsm Staple Position: Corner, Double Staple Capacity: A4, B5: 100 sheets (52 to 80 gsm) A3, A4R, B4: 50 sheets (52 to 80 gsm) Power Source: 100-240V AC/50-60 Hz/2.8A Dimensions (W x D x H): 782 x 765 x 1,040 mm (when the extension tray is extended) Weight: Approx. 64 kg	Puncher Unit-BU1	(Requires either the Staple Finisher-W1 PRO or Booklet Finisher-W1 PRO) Four Holes Acceptable Punch Paper Weight: 52 to 256 gsm Acceptable Punch Paper Size: Four holes A3, A4, A5, B4, B5, Custom size (257.0 x 182.0 mm to 297.0 x 432.0 mm) Power Supply: From the finisher
		Multi Function Professional Puncher-B1	(Requires either the Staple Finisher-X1, Booklet Finisher-X1, Staple Finisher-W1 PRO or Booklet Finisher-W1 PRO) Acceptable Punch Paper Weight: Bypass: 75 to 256 gsm Punch: 75 to 256 gsm Acceptable Punch Paper Size: Bypaass: 100 x 148 mm to 330.2 x 487.7 mm, Punch: A3, A4, A4R, A5 Supported Punch Dies (optional): A4: Loose Leaf (2- or 4- hole), Velo Bind (12-hole), Plastic comb (21-hole), Twin Loop (23- or 34- hole), Color Coil (47-hole) Power Source: 230V, 50Hz, 2.0 A Dimensions (W x D x H): 445 x 795 x 1,040 mm Weight: 102 kg

TECHNICAL SPECIFICATIONS

imageRUNNER ADVANCE DX 8700 Series

Inner Booklet Trimmer-A1	(Requires Booklet Finisher-X1) Waste Tray Capacity: Approx. 1,500 Sheets Acceptable Paper Weight: 60 to 256 gsm Trim Amount: 2 to 20 mm Acceptable Paper Size: SRA3, A3, A4, B4, Custom size: 195.0 x 270mm to 330.2x 457.2mm Power Source: from the finisher	HARDWARE ACCESSORIES	
Booklet Trimmer-F1	(Requires Booklet Finisher-W1 PRO) Booklet Capacity: 10 booklets (booklet size: A4, 50 sheets, 80 gsm) Acceptable Paper Weight: 52 to 256 gsm, 64 to 300gsm (cover sheet only) Acceptable Paper Size: SRA3, A3, A4R, B4, Custom size: 210.0 x 279.4 mm to 330.2 x 487.7 mm) Trim Amount: 2 to 28 mm Trimming Capacity: up to 25 sheets (50 sheets by Half-Fold) (52 to 80 gsm) Waste Tray Capacity: Approx. 5,000 Sheets Power Source: From the Booklet Finisher-W1 PRO Dimensions: 2,095 x 790 x 1,040 mm (including joint) Weight: Approx. 178 kg	Card Readers	Various card readers available e.g. MiCard Plus. Please contact local Canon Office for more details. Copy Card Reader-F1 Copy Card Reader Attachment-A4
Document Insertion Unit-N1	(Requires either the Staple Finisher-X1, Booklet Finisher-X1, Staple Finisher-W1 PRO or Booklet Finisher-W1 PRO) Number of Trays: 2 Tray Capacity (with 80gsm paper): Upper tray: 200 sheets Lower tray: 200 sheets Acceptable Paper Type: Thin, Plain, Recycled, Color, Heavy, Coated, Tracing, Bond, Pre-punched, Letterhead, Tab Acceptable Paper Size: SRA3, A3, A4, A4R, B4, B5, B5R, Custom size: 182 x 182 mm to 330.2 x 487.7 mm Acceptable Paper Weight: 52 to 256 gsm Power Supply: 100-240V, 50/60Hz, 1.0 A Dimensions (W x D x H): 336 x 793 x 1,407 mm (attached to the device: width excluding document tray) Weight: Approx. 61 kg	Others	Upright Control Panel-J1 Utility Tray-B1 Tab Feeding Attachment Kit-B1 Numeric Keypad-A1 Finisher Jogger Kit-A1
Paper Folding Unit-J1	(Requires either the Staple Finisher-X1, Booklet Finisher-X1, Staple Finisher-W1 PRO or Booklet Finisher-W1 PRO) Supported Folding Type: Z-Fold, C-Fold, Accordion-Z-Fold, Double Parallel-Fold, Half-Fold Acceptable Paper Type: Thin, Plain, Recycled, Color, Bond Acceptable Paper Sizes: Z-Fold: A3, A4R, B4 C-Fold, Accordion Z-Fold, Half-Fold, Double-parallel Fold: A4R Acceptable Paper Weight: Z-Fold, Accordion Z-Fold, C-Fold, Half-Fold: 52 to 105gsm Double Parallel Fold: 52 to 90gsm Output Capacity (with 80 gsm paper): C-Fold/Accordion Z-Fold: A4R: approx. 40 sheets Double Parallel-Fold: A4R: approx. 25 sheets with Staple Finisher-X1 or Saddle Finisher-X1 (in total) Z-Fold: A3, B4: 70 sheets, A4R: 30 sheets Half-Fold: A4R: 30 sheets with Staple Finisher-W1 PRO or Saddle Finisher-W1 PRO (in total) Z-Fold: A3, B4: 60 sheets Half-Fold: A4R: 50 sheets Power Source: From the finisher Dimensions (W x D x H): 336 x 793 x 1,190 mm Weight: Approx. 71 kg	SECURITY OPTIONS	2.5inch/250GB HDD-N1 2.5inch/1TB HDD-P1 HDD Mirroring Kit-J1
		SYSTEM AND CONTROLLER OPTIONS	
		Print Accessories	PCL International Font Set-A1 PCL PRINTER KIT-BD1 PS PRINTER KIT-BD1 Barcode Printing Kit-D1 imagePASS-Y3 V1.1 Fiery Impose Fiery Compose Fiery Impose and Compose Fiery imageViewer Removable HDD Kit-B6
		Barcode Printing	
		EFI-Fiery Based Controller	
		EFI-Fiery Based Controller Options	
		System Accessories	Copy Control Interface Kit-A1 Serial Interface Kit-K3 Connection Kit-A2 for Bluetooth LE NFC Kit-E1
		Fax Accessories	Super G3 FAX Board-AS1 Super G3 2nd Line Fax Board-AS1 Remote Fax Kit-A1 IP FAX Expansion Kit-B1
		OTHER OPTIONS	
		Accessibility Accessories	ADF Access Handle-A1 Voice Guidance Kit-G1 Voice Operation Kit-D1
		Staple Cartridges	Staple-N1 Staple-P1 Staple Cartridge-X1 Staple Cartridge-Y1

Software & Solutions



Certifications and compatibility



Canon

Canon Ireland
3006 Lake Drive
Citywest, Saggart
Co. Dublin, Ireland
Telephone No: 01 2052400
Facsimile No: 01 2052525
canon.ie

Canon (UK) Ltd
5 The Square
Stockley Park
Uxbridge
UB11 1ET
Tel: 01895 648 000
www.canon.co.uk

Canon Inc.
canon.com
Canon Europe
canon-europe.com
English edition
© Canon Europa N.V., 2020